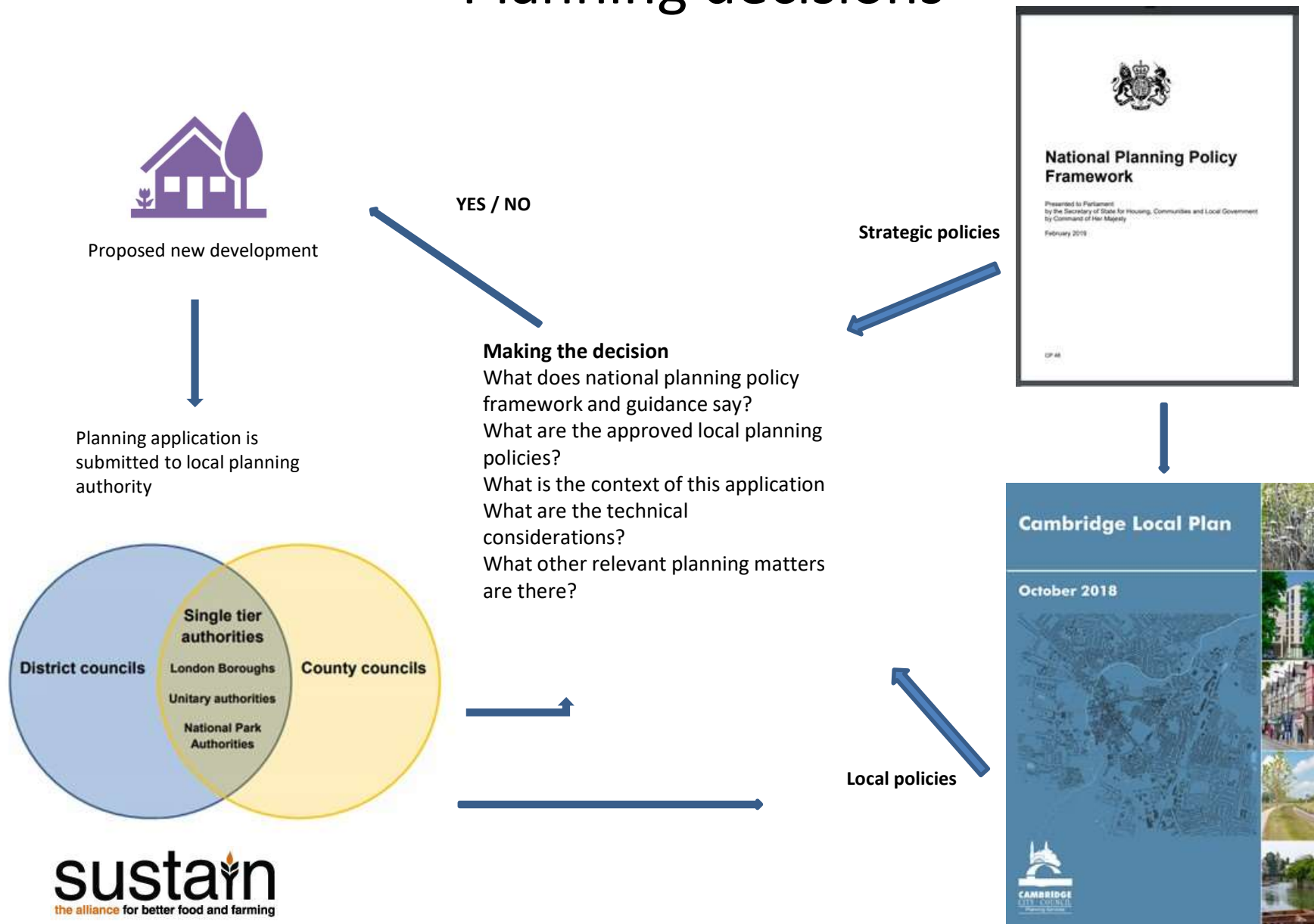


A Beginners Guide to Planning Sustainable Food Places

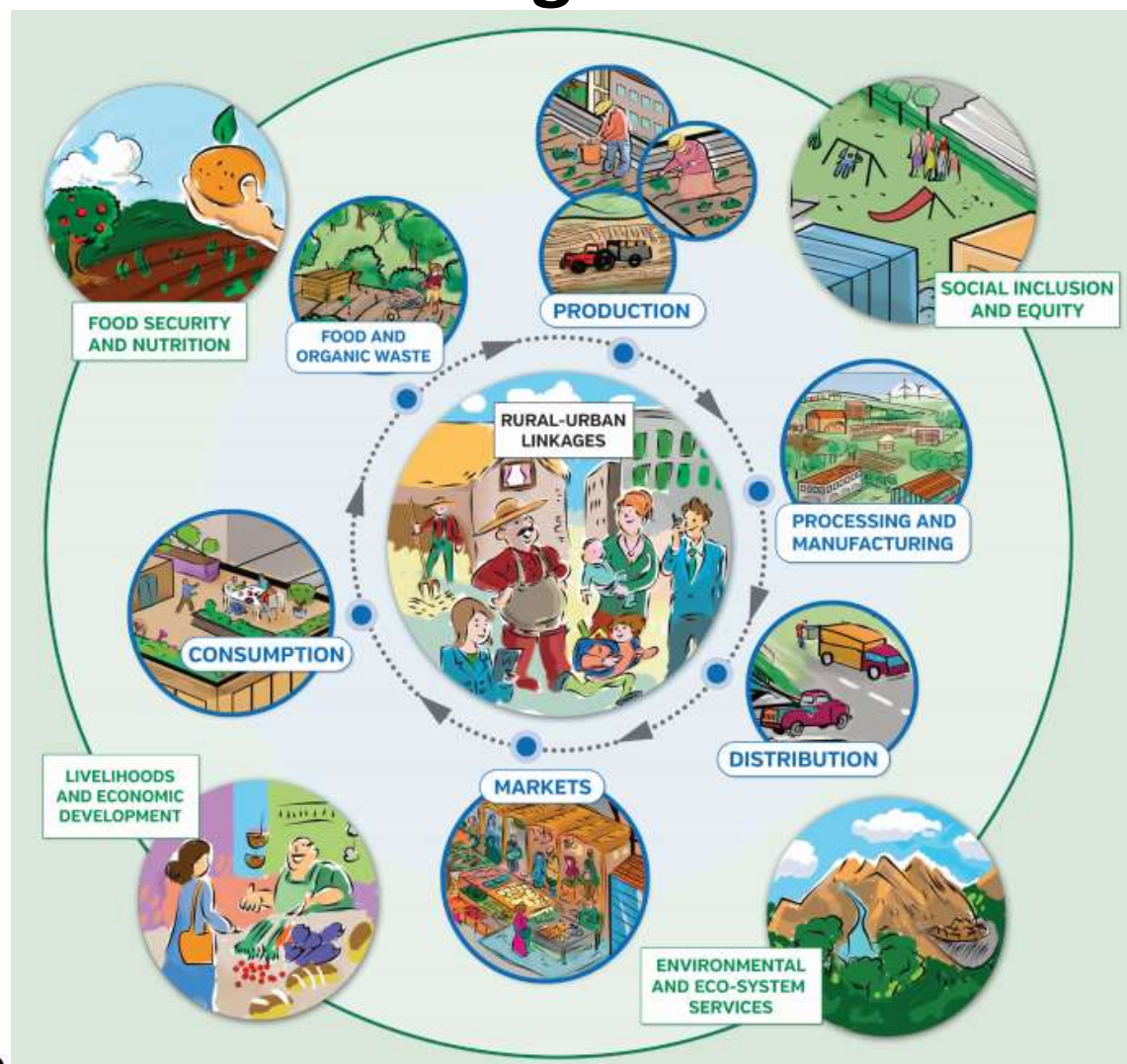


Gillian Morgan - Sustain

Planning decisions



Spatial Vision for a Sustainable Food City Region





Food is a Spatial Planning Issue

What does a Sustainable Food Place look like?

- Access to healthy food eg
 - protection of local shops,
 - encouragement of food markets,
 - location of hot food takeaways
- Space for community gardens and food growing in major housing developments
- Edible planting and species of biodiversity value in landscaping schemes
- Agricultural land in the urban fringe and Green Belt is in productive use



Good Food Contributes to Local Strategic Objectives

- Sustainability
- Climate Change
- Green Infrastructure
- Health
- Economy
- Regeneration
- Design and Amenity

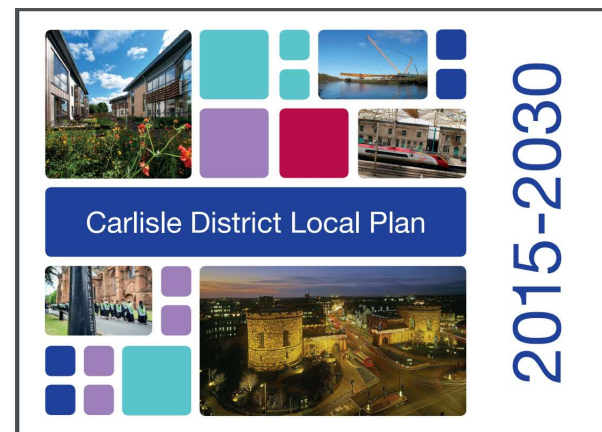


Local Plan Policies

Spatial Strategy and Strategic Policies

Policy SP 9 - Healthy and Thriving Communities

6. protecting and promoting the role of community food growing spaces including allotments, community orchards and community gardens in providing social and mental health benefits and access to healthy, affordable locally produced food as part of Carlisle's role as a Food City;



3.92 Carlisle District is a founding member of the Sustainable Food Cities Network which strives to create a City where good food flourishes and where we work in partnership to empower change towards a vibrant and inclusive food culture. As part of the commitment to sustainable development, sustainable food production will be promoted in consideration of its contribution to health and wellbeing, environmental sustainability, local commercial enterprise prosperity and strengthening communities. Acknowledging and acting to protect the roles of community growing spaces such as allotments, community orchards, community gardens and farmers' markets in providing access to healthy, affordable locally produced food will assist this aim.

Local Plan Policies

Policy 46 (adopted 2017)

Local food growing

1. The use of land and buildings as new allotments, orchards and for local food growing spaces and production will be supported, including the temporary use of vacant or derelict land or buildings and the use of amenity greenspace on housing estates and other open space areas, where this does not conflict with other policy objectives or land use priorities.
2. The incorporation of community gardens, allotments, orchards and innovative spaces for growing food, including green roofs, will be encouraged and supported in new developments where possible and appropriate, particularly where there is demand for food growing space in the vicinity of the application site.
3. The inclusion of productive trees and plants in landscaping schemes will be encouraged where appropriate.

<http://ow.ly/JarZ30bsTsc>

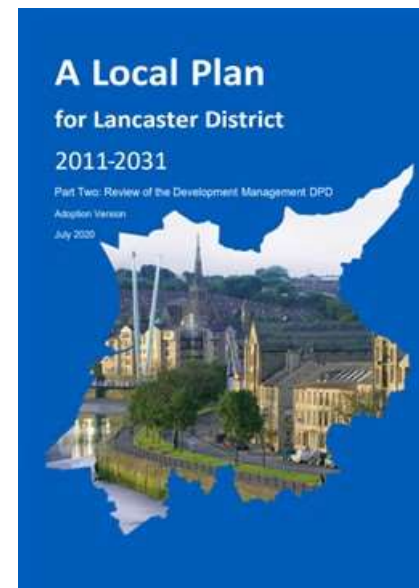
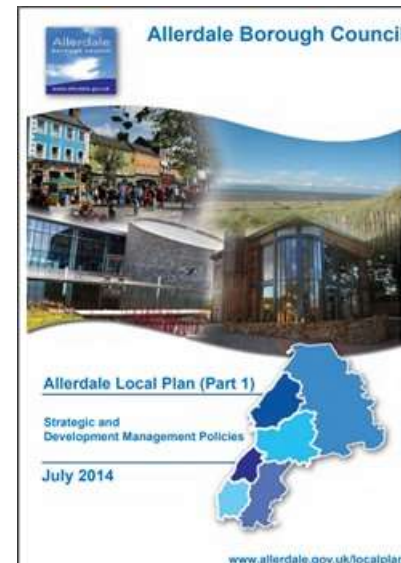


Local Plan Policies

S2 Sustainable Development Principles. The Local Plan will promote sustainable development as a core principle running through the entire plan. All development within the Plan Area, regardless of scale or nature, will be assessed against this policy.

- Support local food production and farming to reduce the area's food miles by avoiding significant development on the best and most versatile agricultural land where possible;

POLICY DM20: HOT FOOD TAKEAWAYS AND BETTING SHOPS. The City Council will support proposals for hot-food takeaways within identified centres unless: **It would result in additional hot food takeaways in a ward where more than 15% of year 6 pupils or 10% of reception pupils are classed as obese.**



Key Messages

- **Sustainable Food Places**
Think: what do you want your place to look like?
- **Developers**
Improve social & environmental attractiveness of development
- **Councils**
Planning for a sustainable food system meets many strategic objectives



2020 Planning white paper

Initial thoughts

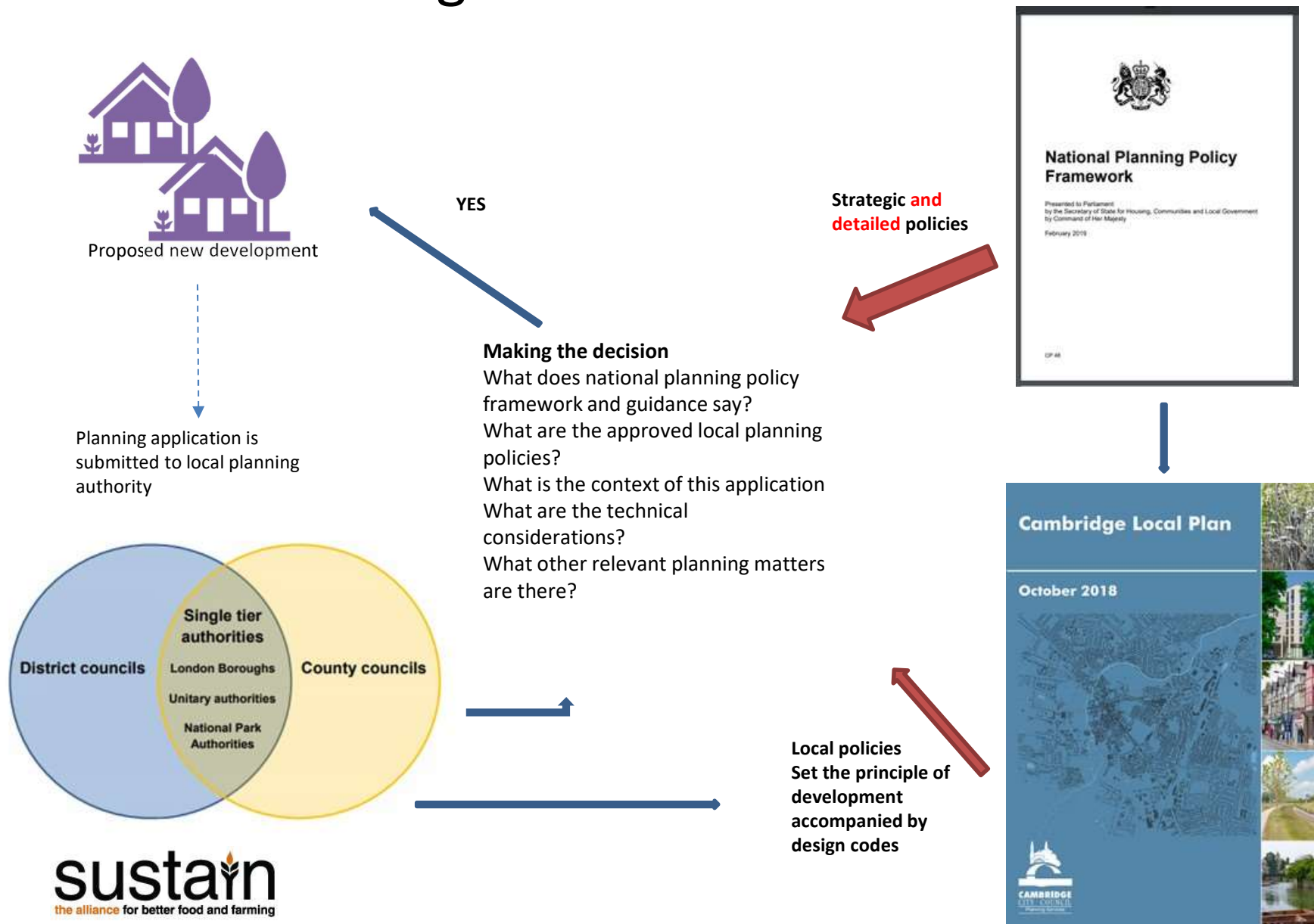
<https://www.sustainweb.org/blogs/sep20-planning-reforms/>



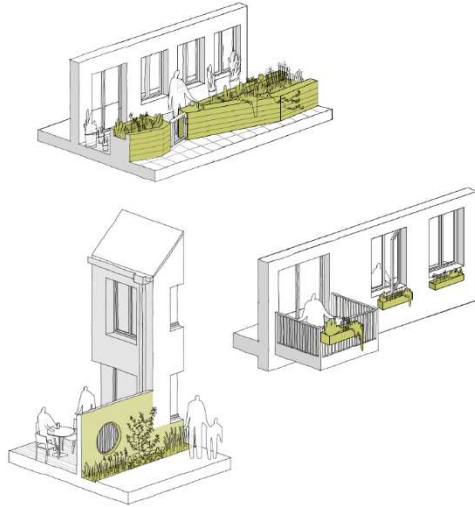
<https://www.gov.uk/government/consultations/planning-for-the-future>

Consultation deadline 29 October

Planning decisions – the new world



Good Design



Making space for planting

Illustrations courtesy of HULL RESIDENTIAL
DESIGN GUIDE

copyright of Harper Perry Ltd and Hull City Council



Wellbeing Design Guide

This guide aims to assist designers, developers, authorities and stakeholders in the design and delivery of healthy, sustainable places within the City of Nottingham.

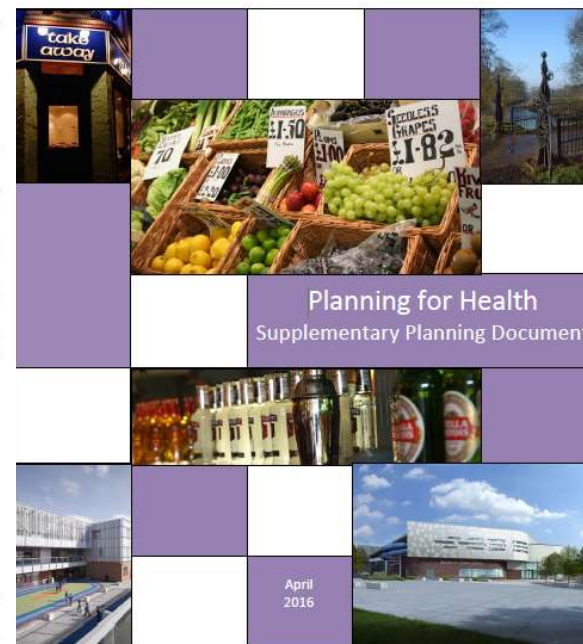
This guide was produced in collaboration with NGFP

<https://www.dqfnottingham.org.uk/wellbeing-design-guide>

Planning for Health

Contents

1. Introduction and Scope	3
2. Planning and Public Health Context	5
3. Key Considerations	10
Promoting Healthy Developments	10
<i>Key Consideration 1 – Promoting Healthy Developments</i>	10
Health Impact Assessments	10
<i>Key Consideration 2 – Health Impact Assessments</i>	10
Hot Food Takeaways	11
<i>Key Consideration 3 – School Exclusion Zones</i>	11
Alcohol	13
<i>Key Consideration 4 – Control of Alcohol Sales from Local and Convenience Shops</i>	13
Smoking	14
<i>Key Consideration 5 – Control of Shisha Cafés</i>	14
Allotments and Community Food Growing Spaces	15
<i>Key Consideration 6 – Protection of Allotments and Community Food Growing Spaces</i>	15
<i>Key Consideration 7 – Provision of new Allotments and Community Food Growing Spaces</i>	15



Planning Policy Framework for a sustainable food system

Policies	Urban City centre	Peri urban Green Belt	Rural
Food Growing			
• Allotments	Y		
• Community gardens	Y		
• Growing enterprises / food production	Y	Y	Y
• Land/soil protection		Y	Y
• Edible landscaping (also in public realm)	Y		
Access to healthier food			
Retail	Y		
• Markets			
• Hot food takeaway	Y		
• Farm shop		Y	Y
• Community / local shops	Y	Y	Y
Public Realm			
• Drinking water fountains	Y		
• advertisements	Y		
Internal residential standards	Y		Y
• Food storage. Kitchens, dining			
Transport	Y	Y	Y
• Walking, cycling, public transport			

Next steps

- Make sure the current planning system is working towards a sustainable food system in your place
- Read your local plan and identify parts relevant to food
- Befriend a planning councillor or officer
- Recruit a volunteer to be your planning champion
- Contribute to debate on new national policy
- Need more support? -Planning masterclass?

To help you get started -
Planning Food Cities Toolkit

<https://www.sustainweb.org/planning/>

Contact: gillian@sustainweb.org

