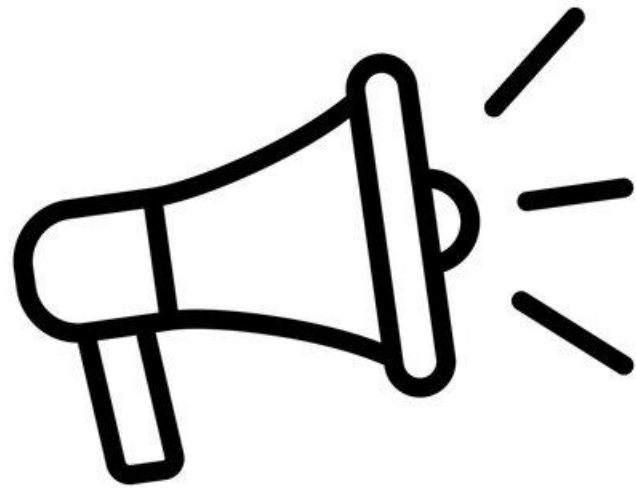




# Engaging with your MP



Oli Ratcliffe  
Public Affairs Officer, Sustain



# What I will cover

---

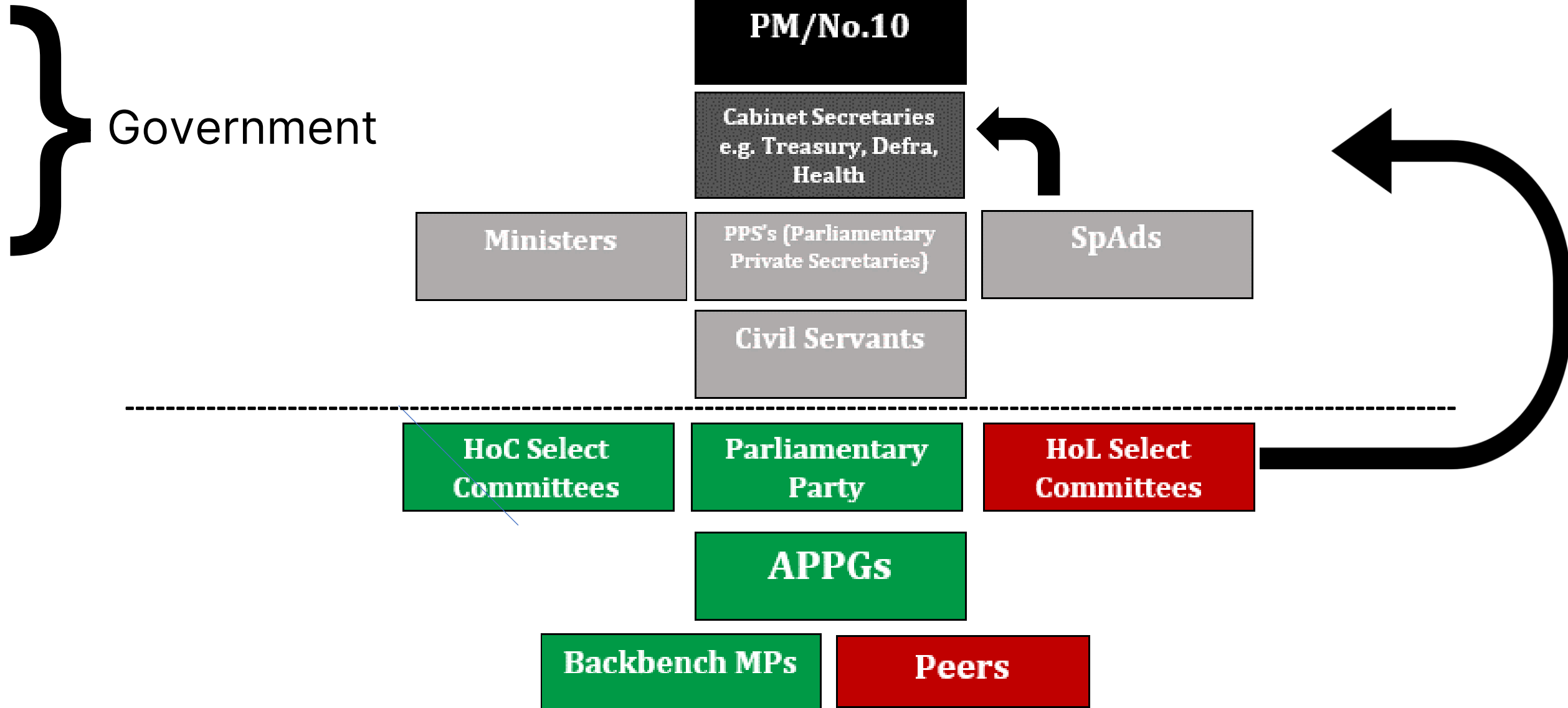
## Part 1: Who is who

- How Parliament works
- The devolved nations

## Part 2: How do we engage

- Finding your MP
- How to engage

# How Parliament works





# Backbench MPs

- 650 MPs across the UK Parliament each representing a constituency





# Backbench MPs

- **Not** on government payroll, more likely to be outspoken
- They are obliged to get back to you- make sure they know you're local!





# Backbench MPs

## Why engage?

- Will help write to a Minister on your behalf- privately or publicly
- Will help you engage with other MPs
- Will submit PQs on your behalf
- Will attend events, roundtables, debates and raise profile of your issues
- Amend bills on your behalf
- Start private members' bills on your behalf





# If your MP is a Minister

- They are still obliged to represent you
- Find out about their role, is it relevant?
- Try and engage with other local MPs in your area/region





# APPGs

All-Party Parliamentary Groups (APPGs) are informal cross-party groups that have no official status within Parliament.





# APPGs

## Why engage?

- Not as influential as Committees but they are useful at finding out what MPs/Lords are interested in your area
- Useful bridges to other MPs and Ministers; might help share e actions, events, briefings and letters to Ministers



# Select Committees

- Committee Chairs one of the most influential MPs that sit outside of Government
- Committee reports generate responses from government and get public attention including press coverage.

## Why engage?

- Members can help boost profile of your campaigns via PQs, letters, events
- HoC Committee for every department, HoL follow certain topics
- Cross party membership and hold government to account
- Undertake inquiries and reports on certain topics





# Education Committee

## Commons Select Committee

The Education Committee scrutinises the work of the Department for Education, covering children's social care, schools, colleges, the early years and higher education. The Committee also holds regular hearings with DfE's arms-length bodies, including Ofsted, Ofqual and the Children's Commissioner. You can follow the Committee on Twitter [@CommonsEd](#)

Summary **Membership** Events Publications News

### 11 current committee members

Export list as CSV

View former members >



**Rt Hon Robert Halfon MP**

Conservative

Harlow

Chair Commons



**Caroline Ansell MP**

Conservative

Eastbourne

Commons



**Apsana Begum MP**

Labour

Poplar and Limehouse

Commons



**Mirlam Cates MP**

Conservative

Penistone and Stocksbridge

Commons



**Anna Firth MP**

Conservative

Southend West

Commons



**Tom Hunt MP**

Conservative

Ipswich

Commons



**Dr Caroline Johnson MP**

Conservative

Sleaford and North Hykeham

Commons



**Kim Johnson MP**


Labour

Liverpool, Riverside

Commons



[Parliament website](#)



# Shadow teams and party spokespeople

---

Find out who is waving the food and farming flag for each party





# Shadow teams and party spokespeople

## Why engage?

- Can help write to Government
- Often involved in manifesto formulation
- Will support with amendments, PQs and debates



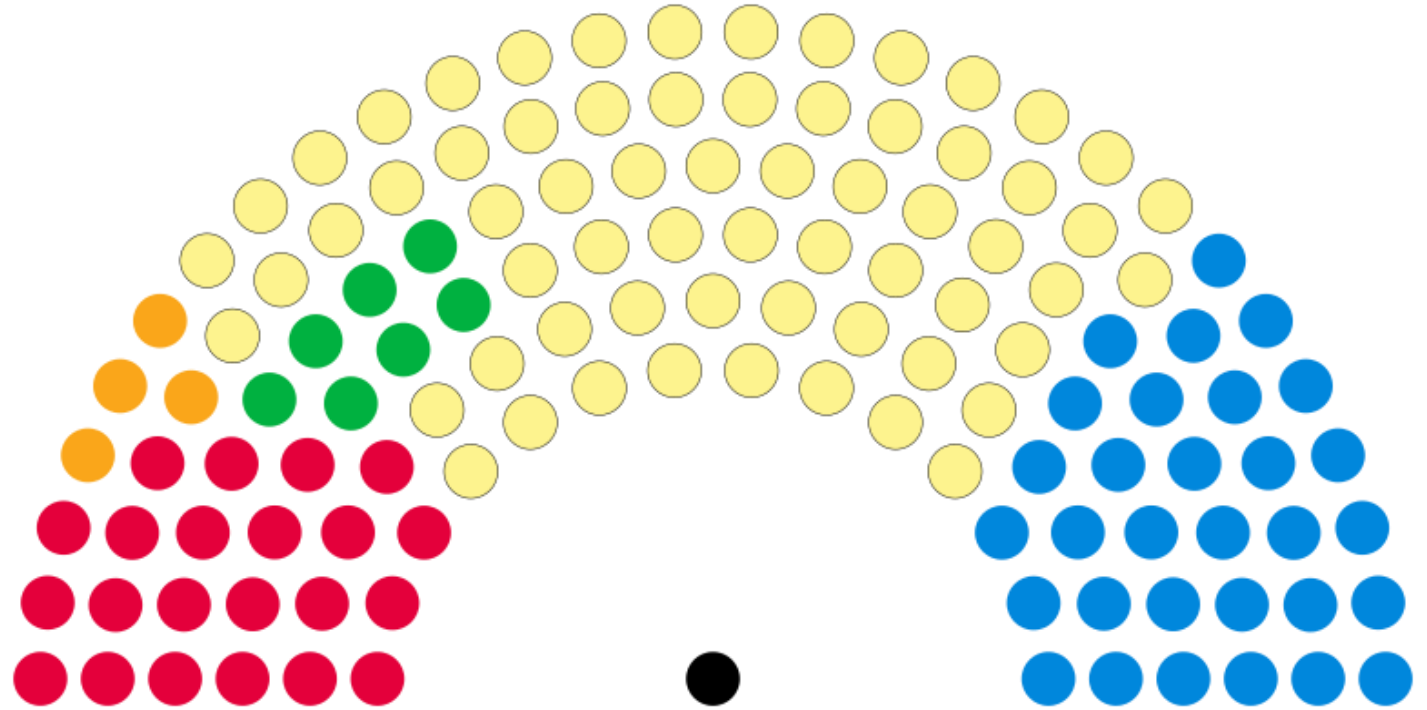
# Parliamentary Questions (PQs)

- A Parliamentary Question (PQ) is a question put formally to a government minister about a matter they are responsible for by an MP or a member of the Lords
- PQs may be asked orally - during ministerial question time in either Chamber - or in writing
- They are used to seek information or to press for action from the Government – they make your issue visible to a minister
- You can also write to ministers and ask for a response. That alone triggers a process within a Department that makes your issue visible



# Scottish Parliament/ Holyrood

- Elect 129 MSPs (Members of Scottish Parliament) every 5 years
- Cabinet Secretaries and Ministers
- Committees to scrutinize work of Government
- What is devolved?
  - the economy, education, health, justice, rural affairs, housing, environment, equal opportunities, consumer advocacy and advice, transport and taxation





The Scottish Parliament  
Pàrlamaid na h-Alba

#### Devolved matters include



- > agriculture, forestry and fisheries
- > education and training
- > environment
- > health and social services
- > housing
- > law and order
- > local government
- > sport and the arts
- > tourism and economic development
- > many aspects of transport

#### Reserved matters include



- > benefits and social security
- > immigration
- > defence
- > foreign policy
- > employment
- > broadcasting
- > trade and industry
- > nuclear energy, oil, coal, gas and electricity
- > consumer rights
- > data protection
- > the Constitution



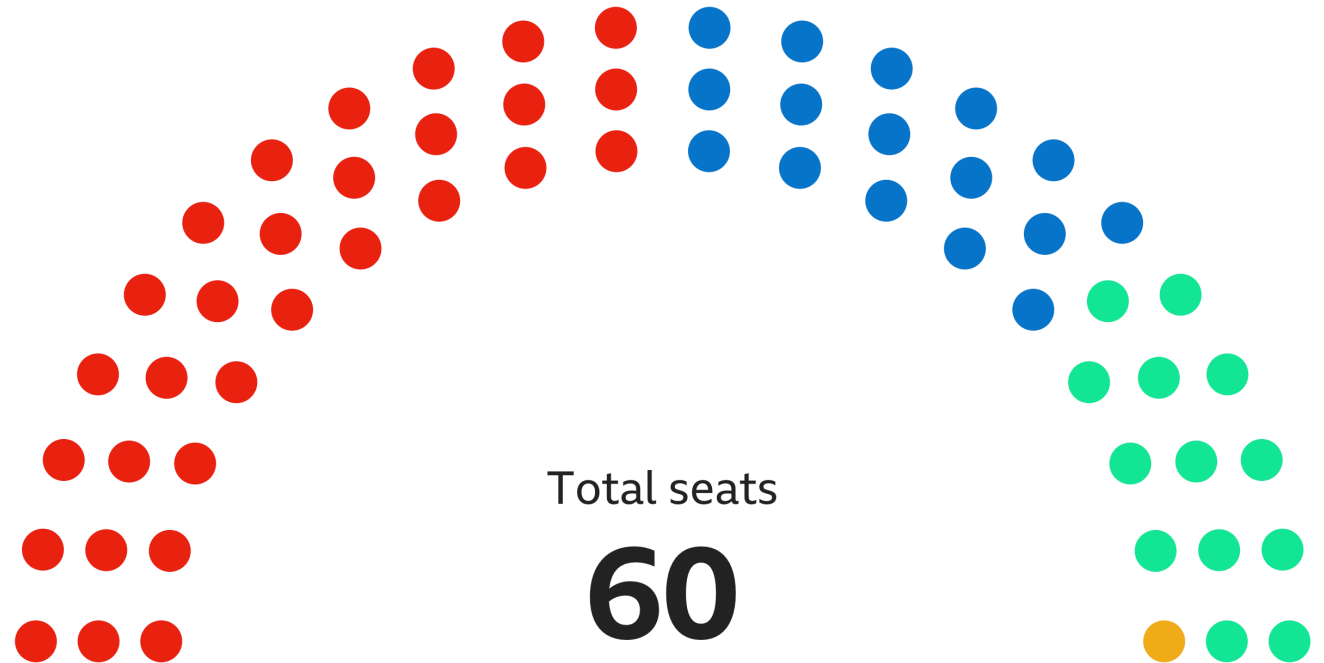
# Welsh Parliament/ Senedd

- Elect 60 MS's (Members of Senedd) every 5 years
- Cabinet secretaries and ministers
- Committees and APPGs to scrutinise work of Government
- What is devolved?
  - Local Gov, Housing, Ag and fisheries, Health and Social Care, Transport, Education, Arts, Culture and Welsh language....

## Welsh Parliament

Number of seats by party

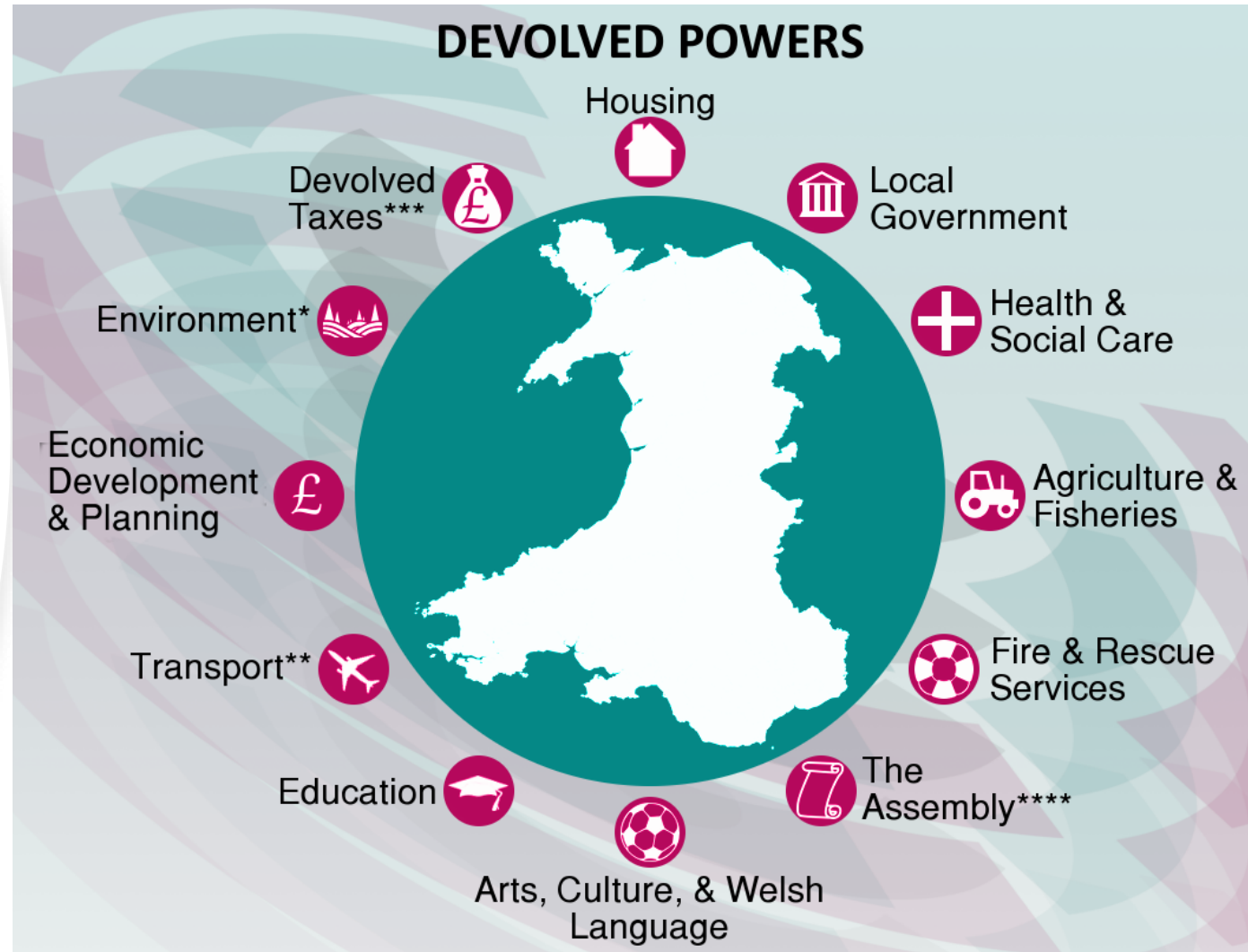
- Labour: **30**
- Conservative: **16**
- Plaid Cymru: **13**
- Liberal Democrat: **1**



After 60 of 60 seats declared, 14:29, 8 May 2021

# Welsh Parliament/ Senedd

- Elect 60 MS's (Members of Senedd) every 5 years
- Cabinet secretaries and ministers
- Committees and APPGs to scrutinise work of Government
- What is devolved?
  - Local Gov, Housing, Ag and fisheries, Health and Social Care, Transport, Education, Arts, Culture and Welsh language....





# Northern Ireland Assembly/ Stormont

---

- Elect 90 members known as Members of the Legislative Assembly (MLAs) every 5 years
- What is devolved? [Full list](#)  
-e.g. health and social services, education, employment and skills, agriculture, social security
- Currently in deadlock over May 2022 election...



# Scottish Government secondary school pup

Until now Holyrood has only committed to p  
time that they will now trial a scheme for sec

## Consultation: Northern Ireland Food Strategy Framework

10 November 2021



Have your say on a new strategic approach for food in Northern Ireland

## Universal Free School Meals Roll-out to begin in September

Primary school class will begin to receive universal  
free school meals from as early as September, the Welsh  
Government has confirmed.

First published: 20 June 2022

Last updated: 20 June 2022

Government  
of Wales  
Gŵylfa  
h-Alba

Publications

Statistics and research

Consultations

Blogs



## Proposals to introduce a Food (Wales) Bill wins Senedd support

[Home](#) > [News](#)

News

# Good Food Nation Bill Passed

Published: 15 June 2022 18:33

Part of: [Farming and rural](#)

Scottish Parliament passes the bill after Stage 3 debate.






End of Part 1:

---

Any questions?




Part 2:  
How to  
engage?







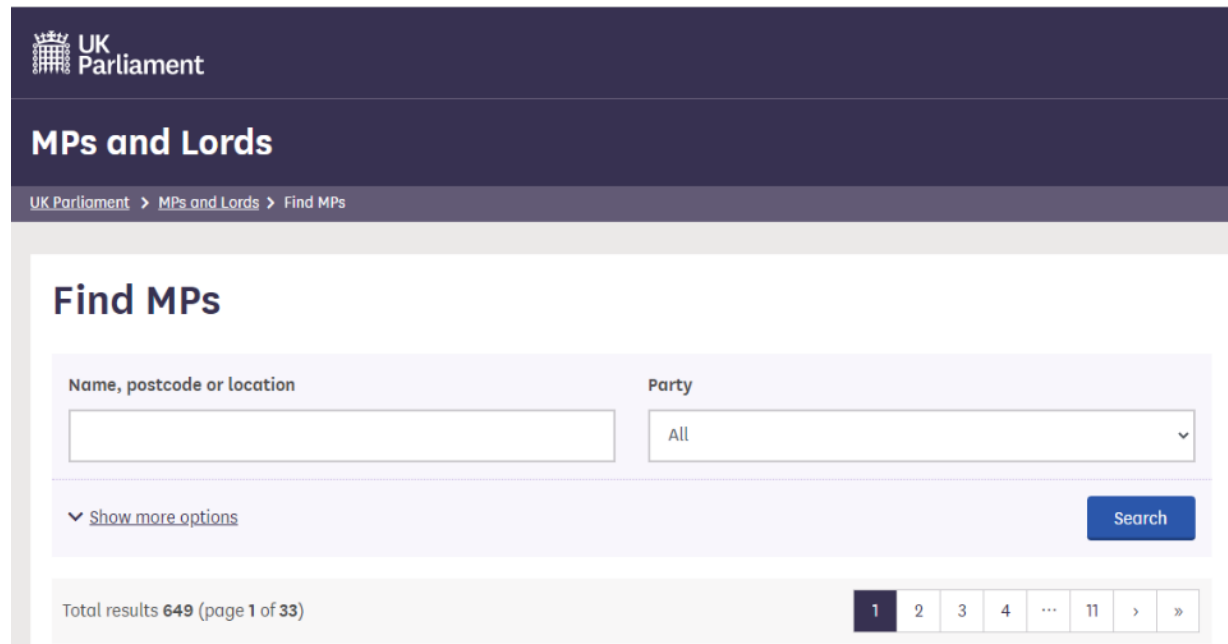
# Finding your MP

- 
- [Parliament website](#)
  - [TheyWorkForYou](#)
  - [Parallel Parliament](#)
  - Their website
  - Their social media

# Finding your MP

## Parliament website

<https://members.parliament.uk/members/Commons>



The screenshot shows the 'Find MPs' search interface on the UK Parliament website. At the top left is the UK Parliament logo. Below it is the heading 'MPs and Lords' and a breadcrumb trail: 'UK Parliament > MPs and Lords > Find MPs'. The main heading is 'Find MPs'. There are two search criteria: 'Name, postcode or location' with an empty text input field, and 'Party' with a dropdown menu currently set to 'All'. Below these is a link for 'Show more options' and a blue 'Search' button. At the bottom, it shows 'Total results 649 (page 1 of 33)' and a pagination bar with buttons for 1, 2, 3, 4, an ellipsis, 11, and navigation arrows.



# Helen Hayes

Helen Hayes is the Labour MP for [Dulwich and West Norwood](#), and has been an MP continuously since 7 May 2015. She currently undertakes the role of Shadow Minister (Education).



## Contact information

Parliamentary career

Voting record

Early Day Motions

Spoken contributions

Written questions

## Contact Helen Hayes

This section contains web, social and other contact information for Helen Hayes.

When contacting this Member, they should be addressed as **Helen Hayes**.

For information about when you should contact MPs, Lords, or other organisations/individuals, review the [who to contact with my issue](#) page.

Parliament takes the safety and wellbeing of its Members very seriously. Any contact which is threatening or offensive may be passed to the police for action.



Parliamentary Office

# Finding your MP

## TheyWorkForYou



The image shows the header and main content area of the TheyWorkForYou website. The header includes the site name, a search bar, and navigation links. The main content area features a large green banner with the text 'Does your MP represent you?' and a search form for a postcode. To the right of the search form is a green sidebar with the text 'Democracy: it's for everyone' and a paragraph explaining the site's purpose. At the bottom of the sidebar is a link to 'Find out more about TheyWorkForYou'.

TheyWorkForYou UK  [Search](#) [Sign in](#) [Join](#) [Contact](#)

[MPs](#) [Lords](#) [Debates](#) [Written Answers](#) [Bill Committees](#) [Recent Votes](#) [Upcoming](#)

### Does your MP represent you?

Your postcode

 [Find out →](#)

### Democracy: it's for everyone

You shouldn't have to be an expert to understand what goes on in Parliament. Your politicians represent you... but what exactly do they do in your name?

TheyWorkForYou takes open data from the UK Parliament, and presents it in a way that's easy to follow – for everyone. So now you can check, with just a few clicks: are They Working For You?

[Find out more about TheyWorkForYou →](#)





# Helen Hayes

Shadow Minister (Education)

**Labour MP** for **Dulwich and West Norwood**

[@helenhayes\\_](#)

[Send a message](#)

[Get email updates](#)

Search this person's speeches

[Search](#)

[Overview](#)

[Voting Record](#)

[Recent Votes](#)

- [Votes](#)
- [Appearances](#)
- [Profile](#)
- [Register of Interests](#)

**There are currently votes on relevant topics that are not included in the summaries below. We are working on bringing these records up to date over the next few months.**

**As a result of COVID-19, some MPs were less able to vote in Parliament in certain periods, and this will be reflected by absences in their voting record.**

▶ [Show more detail](#)



## Simon Jupp

Conservative MP for East Devon

[Send a message](#)[Get email updates](#)

Search

[Overview](#)[Voting Record](#)[Recent Votes](#)

- [Votes](#)
- [Appearances](#)
- [Profile](#)
- [Register of Interests](#)

There are currently votes on relevant topics that are not included in the summaries below. We are working on bringing these records up to date over the next few months.

As a result of COVID-19, some MPs were less able to vote in Parliament in certain periods, and this will be reflected by absences in their voting record.

► [Show more detail](#)





# Kim Johnson

Labour - Liverpool, Riverside

Share

Receive E-mail alerts for Kim Johnson's activities



[kim.johnson.mp@parliament.uk](mailto:kim.johnson.mp@parliament.uk)

[View 6 Select Committee Memberships](#)

[View APPG Memberships](#)

[No Previous Appointments](#)

[Commons Debates](#) - [Petitions](#) - [EDMs](#) - [Bills Introduced](#) - [Commons Actions](#) - [Written Questions](#)

[Commons Page](#)

[Hansard Page](#)

[Financial Disclosures](#)

[Expense Claims](#)



Sign up for email updates from Helen and the Lib Dems 

The Liberal Democrats may use the information you provide, including your political opinions, to further our objectives and share it with our elected representatives. Any data we gather will be used in accordance with our privacy policy: [www.libdems.org.uk/privacy](http://www.libdems.org.uk/privacy)  
You can exercise your rights and withdraw your consent to future communications by contacting us: [data.protection@libdems.org.uk](mailto:data.protection@libdems.org.uk) or: DPO, Lib Dems, 1 Vincent Square, SW1P 2PN.

Their Website

← **Helen Morgan MP**    
4,271 Tweets



...  **Following**

**Helen Morgan MP**    
@HelenMorganMP

Proud to be the @LibDems MP for North Shropshire. If you are a constituent and need to contact me, please email [helen.morgan.mp@parliament.uk](mailto:helen.morgan.mp@parliament.uk).


 Harmer Hill, North Shropshire  [helenmorgan.org.uk](https://helenmorgan.org.uk)  
 Joined December 2015

1,654 Following 15.3K Followers

 Followed by Richard Foord MP, Save British Farming , and 35 others you follow

Tweets Tweets & replies Media Likes

 Helen Morgan MP  Retweeted  
 **Liberal Democrats**  @LibDems · 8h ...  
No apology. No remorse. No shame. This Tory Government is a disgrace.  
  
Boris Johnson failed our country. Liz Truss trashed our economy. Now we will have a a third Conservative Prime Minister in 50 days.  
  
Enough is enough, it's time for a General Election.

 Search Twitter



### You might like

-  **MGI**  
@MGI\_Technology **Follow**  
 Promoted
-  **Daisy Cooper MP ...**   
@libdemdaisy **Follow**
-  **Jamie Stone MP**   
@Jamie4North **Follow**

[Show more](#)

### What's happening

UK national news · **LIVE**  
**All the latest from the cabinet reshuffle as Rishi Sunak takes office**  
Trending with [Zahawi](#), [Patel](#)



Their social media



Finding out  
more about  
parli activity

---

[Parliament.uk calendar](#)

---

[TheyWorkForYou](#)

---

[Leader of the House](#) update (Thursday) –  
week ahead

---

Media

---

Fellow stakeholders

Search

▾ [Advanced search](#)

## Results 1–20 of 3000 for "cost of living" food

Did you mean ["cost of giving" "food"](#)?

Sort by [relevance](#) | Sorted by date: newest / [oldest](#) | [Group by person](#)

### [Food: Imports and Security - Question](#) (24 Oct 2022)

Lord Benyon: The noble Baroness is absolutely right that **food** inflation adversely affects those on the lowest incomes and she is right to raise the issue of healthy **food** for children. We have increased the value of our Healthy Start vouchers to £4.25 a week and spent around £600 million a year ensuring an additional 1.25 million infants enjoy a free, healthy and nutritious meal at lunchtime following...

### Create an alert



[Subscribe to an email alert](#) for **"cost of living" food**



Or [get an RSS feed](#) of new matches as they happen.

[What is RSS?](#)



## Top tips for engaging with your MP


- Keep an eye on what they're up to. Use aforementioned resources, join mailing lists, stakeholder groups, sidle up to them at events...
- Struggling to get through? Call their office and ask for the best email.
- Who do they listen to? Influence those people. (Eg local constituents, think tanks, partner organisations) – gather intel and data in preparation.
- Try and get local press coverage to catch their attention





## Top tips for engaging with your MP

- Who are their rivals locally? Get in touch with them!
- Reach out in 'peacetime' as well as busy periods
- Don't be afraid to be a nuisance!



Top tips for  
engaging with  
your MP: What  
camp are they  
in?



## Free marketeers

= small state, pro business,  
enterprise and growth, hostile to  
tax/fiscal measures



FREE  
MARKET  
FORUM



iea

Top tips for  
engaging with  
your MP: What  
camp are they  
in?

## Free marketeers

= small state, pro business,  
enterprise and growth, hostile to  
tax/fiscal measures





Top tips for  
engaging with  
your MP: What  
camp are they  
in?

## Environmentalists

=support Net Zero, nature restoration  
and more friendly to regulation

**CONSERVATIVE  
ENVIRONMENT  
NETWORK**



Top tips for  
engaging with  
your MP: What  
camp are they  
in?

## **Environmentalists**

=support Net Zero, nature restoration  
and more friendly to regulation



Top tips for  
engaging with  
your MP: What  
camp are they  
in?

## **Blue collar Conservatism**

= standing up for working people, job creation, better wages, boosting skills and education





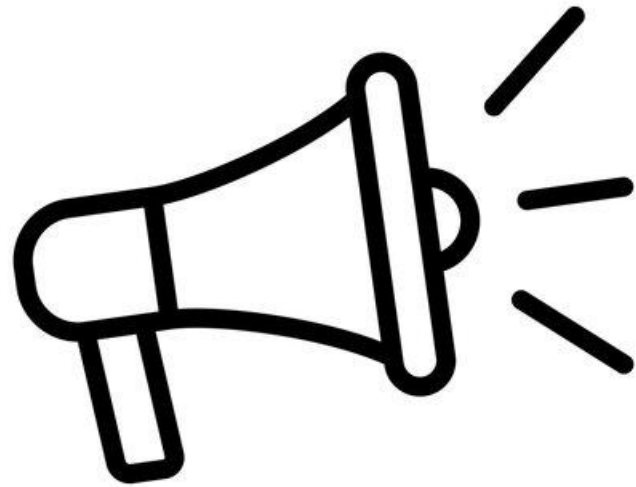
Top tips for  
engaging with  
your MP: What  
camp are they  
in?

## Labour factions

***momentum***

**PROGRESSIVE  
BRITAIN**





# Preparing for a meeting

---

- Find out what committees/APPGs they sit on, research their record and their interests
- Gather evidence and specific info on your area (polling, surveys, petitions!)
- Send briefing- 2 pager briefings are better than lengthy reports!
- Be helpful to their spad, research assistants and policy officials
- Find authentic voices: farmers, local businesses, teachers



## ...In the meeting

- Make it clear who you represent
- Have clear asks and remember the Gove rule – Subsidize, mandate, tax, ban...what powers do they hold? Be practical.
- Ask your MP to submit oral or written PQs
- Invite them to your events/ to visit a local site
- Ask them to write to colleagues/leadership team





Any questions?

---